

Access the latest clinical information quickly and easily, whenever and wherever you need it.

Nationally funded, free to all NHS healthcare staff and learners in England

Paramedics play a crucial frontline role in delivering urgent and emergency healthcare. BMJ Best Practice can help you to provide seamless, effective and high quality treatment to your patients.



Helps you to assess patients, provide emergency treatment and make diagnoses with fast access to evidence-based information



Differential diagnoses, unique treatment algorithms and step-by-step guidance on treatment to support real-life clinical demands



Get the right information, whenever and wherever you need it. Access online and offline access via the Best Practice app



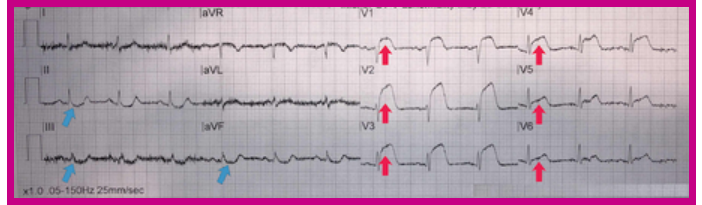
5000+ images and videos which provide animated demonstrations of common procedures. For example, central venous catheter insertion



Stay current and ensure your ongoing professional development, with automatic CME/CPD tracking to support revalidation and appraisal

You are called to see a 64 year old man with severe central chest pain. He complains of retrosternal crushing pain, radiating down his left arm. He feels nauseated and light-headed and is short of breath. He tells you that he has a history of hypertension and diabetes.

Examination reveals that he has a tachycardia and hypotension. You do an immediate ECG.



What is it most likely diagnosis?



What treatment would you start immediately?



What would you say to him and his family?

ST-elevation myocardial infarction

Non-ST-elevation myocardial infarction

Assessment of chest pain

How to access

1. Visit bestpractice.bmj.com/nhsinengland
2. Enter your OpenAthens username and password and click 'Sign in'*
3. If you are a new user, you will need to now register for a BMJ Best Practice user profile. Use your user profile to download the app for access anywhere, anytime, even offline.

*If you need help with your OpenAthens account or setting up BMJ Best Practice, contact your local NHS library or search hlid.org for your local service.

